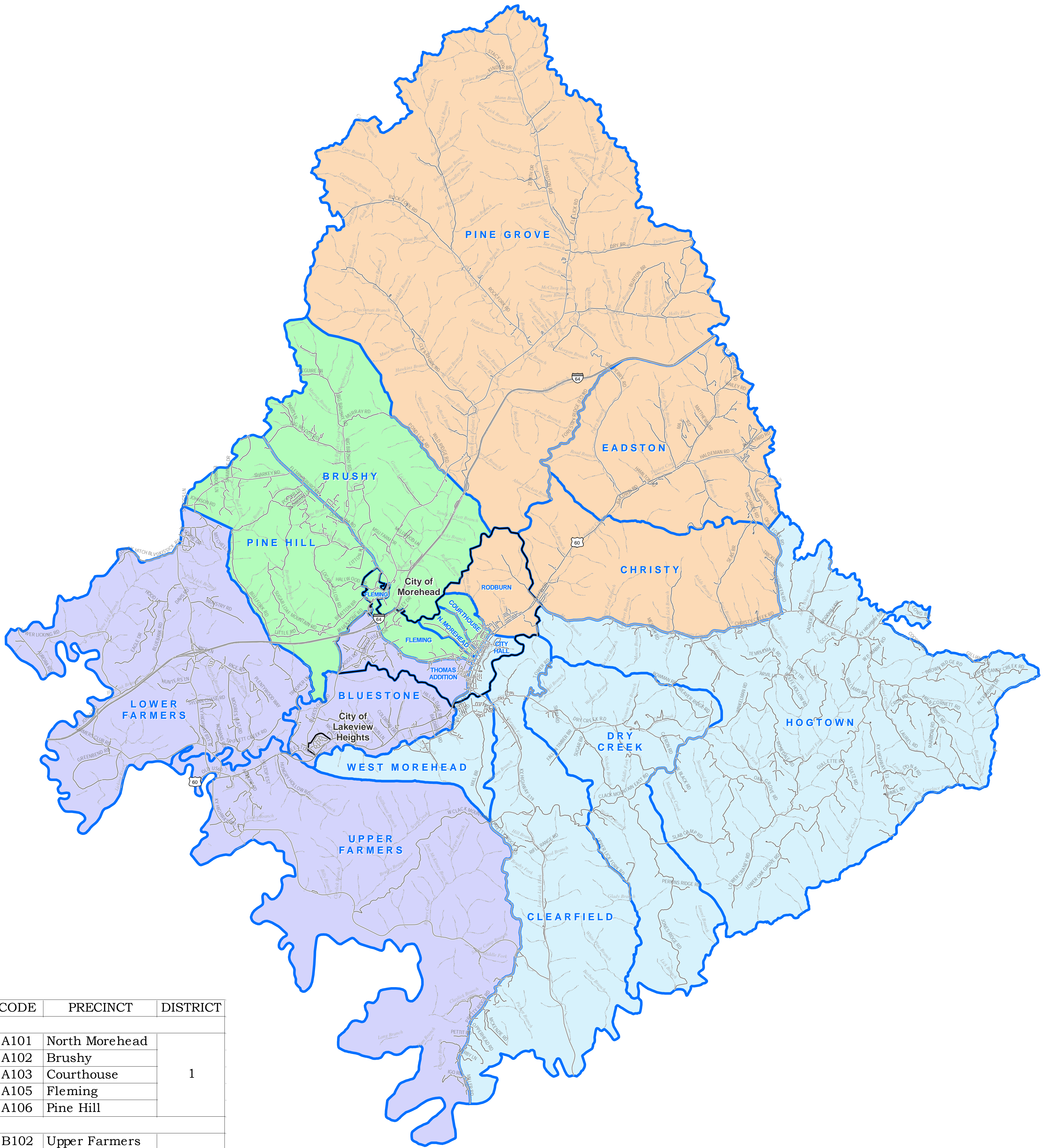


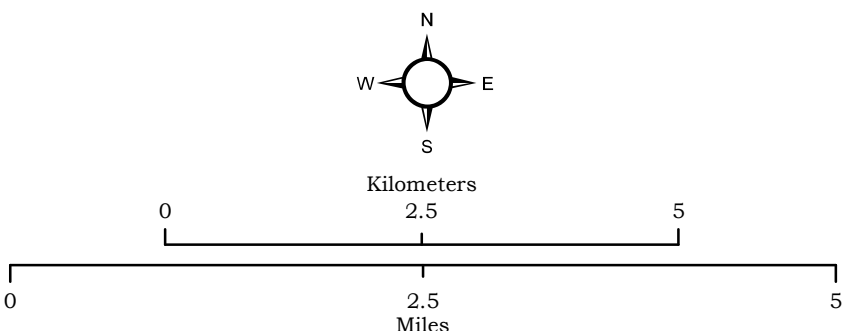
# Rowan County

## Voter Precincts by Magisterial Districts



CODE	PRECINCT	DISTRICT
A101	North Morehead	1
A102	Brushy	
A103	Courthouse	
A105	Fleming	
A106	Pine Hill	
B102	Upper Farmers	2
B104	Thomas Addition	
B105	Bluestone	
B106	Lower Farmers	
C101	Hog Town	3
C102	Clearfield	
C103	City Hall	
C104	Dry Creek	
C106	West Morehead	
D101	Rodburn	4
D102	Eadston	
D103	Pine Grove	
D104	Christy	

- District 1
- District 2
- District 3
- District 4
- INCORPORATED CITY
- STREAMS



All mapped information is believed accurate but is not guaranteed without error. While attempts have been made to ensure the correctness of the information presented, the Gateway Area Development District does not guarantee accuracy, completeness, or suitability for a particular use. Information herein should be independently verified. If you have any questions please contact Joshua Farrow, Geographic Information System Coordinator, Gateway Area Development District, 110 Lake Park Drive, Morehead, Kentucky, 40351.